

Alta^{dt} data technologies

*Innovation,
Quality & Service*



MIL-STD-1553

ARINC-429/717

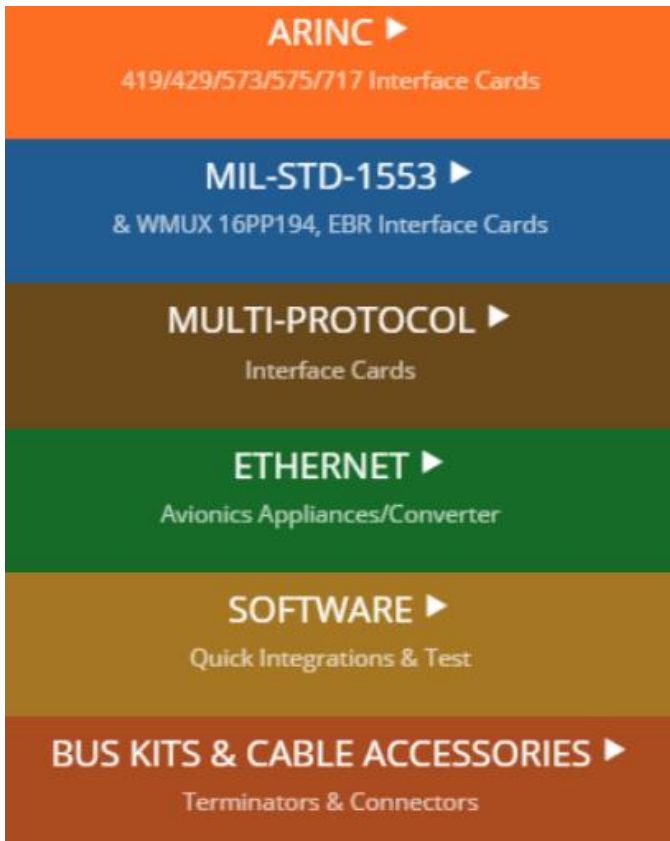
Interface Cards

Real-Time Ethernet Converters

USB & Thunderbolt^(tm) Devices

www.altadt.com
1-888-429-1553

Alta Data Technologies – Company Overview



Founded in 2007, **Alta** is the **Market Leader** in Innovation and Quality of **MIL-STD-1553 & ARINC COTS Interface Cards & Real-Time Appliances**

100+ Years Combined Experience, 45,000+ Items Shipped and \$125M+ Sales Across 100s of Aerospace and MIL Programs

Quality at Every Phase of Alta Operations

- ✓ **5 Year Limited Warranty** – Industry Leading!
- ✓ ISO 9001:2015 Certified
- ✓ ANSI ESD S.20.20 Certified
- ✓ IPC-A-610 Class 3 & J-STD-001
- ✓ Advanced JTAG Boundary Scan
- ✓ Only Tier One/OEM Parts Suppliers
- ✓ FPGA Based Designs to Reduce Parts Obsolescence Risks
- ✓ US Owned and Operated

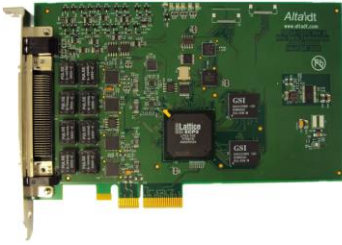


Guaranteed Compliant - No Risk Avionics Integration

Alta 1553 and ARINC COTS Products Interface Cards and Real-Time Appliances

For Test, Simulation or Rugged Embedded Applications,
Alta Has an Interface Device for Your System

PCI, PCI Express (PCIe)
One Lane & Four Lane



PMC, XMC, VPX
cPCI, PXI/PXIe



PC104 PCI and
PC104 PCI Express



PCMCIA/PCCARD/
ExpressCard54



Mini PCI Express
COM Express



Industry Firsts!
USB 3.0 & Thunderbolt 3 (USB-C)
1553 and ARINC Appliances



Real-Time Ethernet Converters (ENETs) for 1553 and ARINC Systems – Another Alta First!

Commercial, Lab and Deployed Appliances

MIL-810G/461F/704F/DO-160 Test Reports



Only 200 grams
13.5 x 3.7 x 4 cm



ENETX – Multi Protocol
Full Rugged – Ready to Deploy!

ENET Models for:

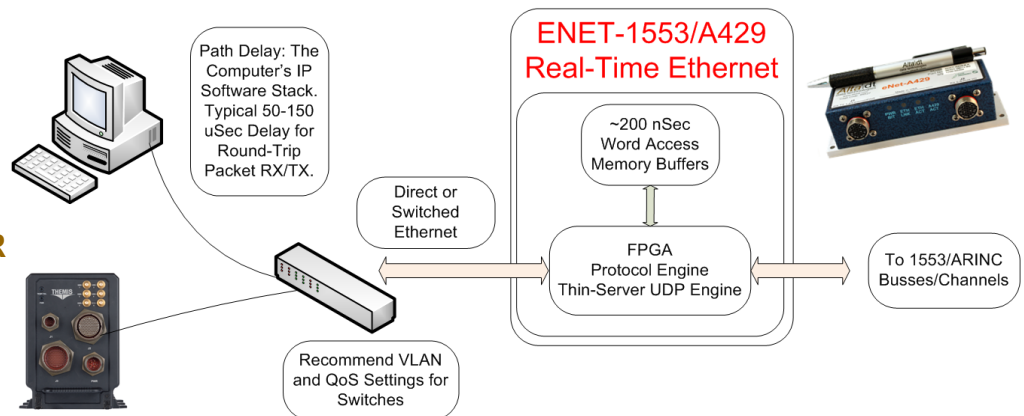
MIL-STD-1553

Enhanced Bit Rate 1553 - EBR

ARINC-429/717

Multi-Protocol

Very Small, No Processor or OS IP Stacks – Real-Time
Interface with Almost Any Client System – UDP Sockets



AltaAPI – Software Development Kit

Proper OSI Layered-Abstraction Model

Alta's Hardware is 2nd to None, and the **AltaAPI** SDK Simplifies Software Integration and Maintenance



AltaAPI Software Architecture
Layered, Modular, Portable

Layer 3

Your OOP (.Net, C#) Application

AltaView, AltaRTVal

Layer 2

Your Application (most applications here)

C, C++, VB, Java, LabVIEW/Windows, DLLs, SOs, etc...
(.Net, C# OOP Layer)

Layer 1

API Module (ANSI C)

1553 and ARINC Operations and Device Management

Layer 0

OS-Specific (ANSI C)

Abstracts Operating System (makes applications portable)

OS-Specific Device Driver (if needed)

Backplane Hardware (PCI, PCIe, Ethernet etc.)

Alta Interface Card/Device

- ✓ No Cost Updates
- ✓ Windows 32 & 64-Bit
XP/2003/7/8/10
- ✓ Linux x86 32 & 64-Bit
- ✓ VxWorks 5.X, 6.X, 7.X
- ✓ NI LabVIEW™, RT,
LabWindows™ Support
- ✓ Small, Fast Design
- ✓ Layer 1 Source Code
- ✓ Portable to most RTOS
- ✓ 100+ Examples!
- ✓ No Maintenance Fees

What Makes **AltaAPI** Different Than All Other 1553 and ARINC SDKs?

The OSI Layered Model Provides Maximum Portability

The same executable program can run on any alike Alta channel or device

Abstraction: The Layer 0 and Layer 1 Simplify and Protect Memory Objects

AltaAPI abstracts low-level hardware pointers and registers for safer code

AltaAPI provides memory management and object boundary protection

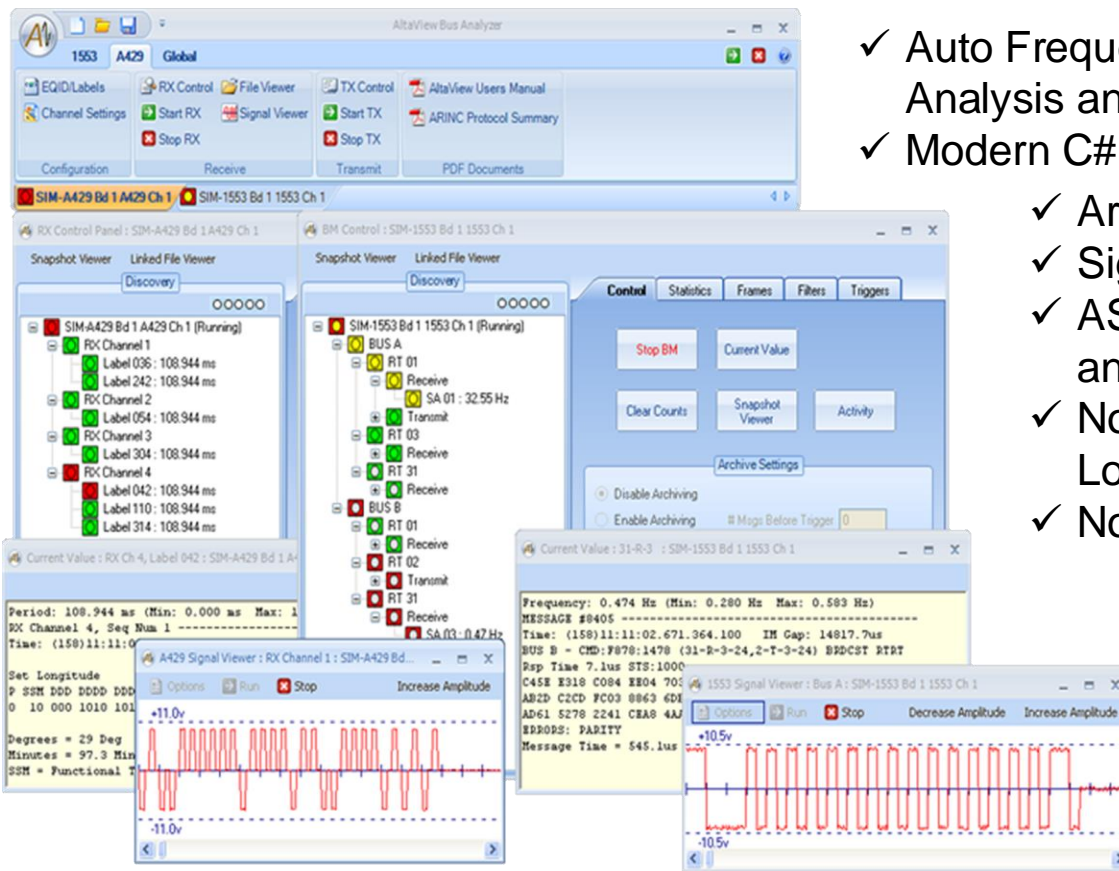
Excellent Documentation and Example Program Templates

Significant Reduction in Development Time and Future Maintenance

/* Single Function Call for 1553 Bus Monitor or ARINC RX! */

```
status = ADT_L1_1553_BM_ReadNewMsgs(DEVID, 1000, &numMsgs, bmMessages);
```

AltaView – The Industry’s Most Advanced Windows Analyzer Software for 1553 and ARINC

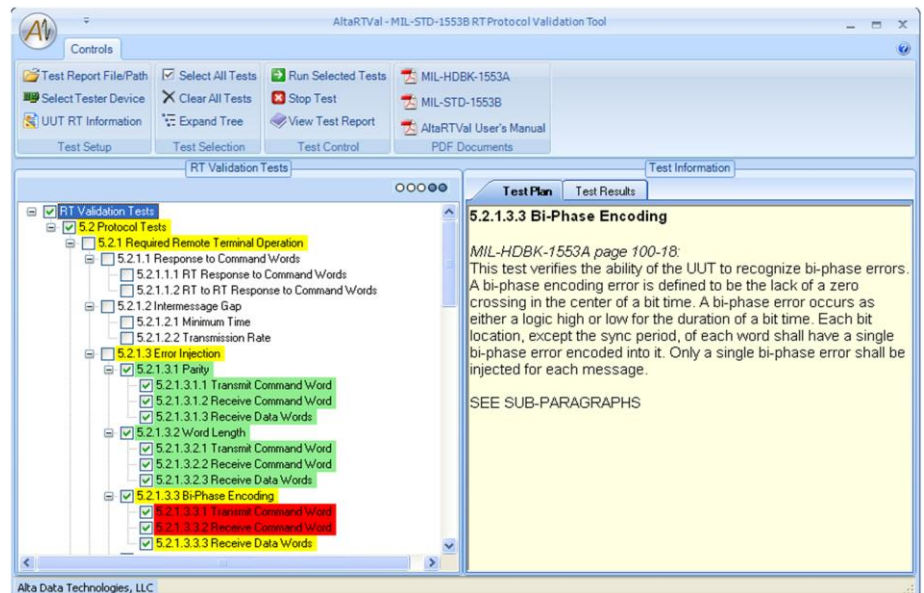


- ✓ Auto Frequency, Loading, Activity Analysis and Data Displays
- ✓ Modern C#, XML Interface
- ✓ Archiving and Playback
- ✓ Signal Capture!!
- ✓ ASCII & CSV Conversion and EU Processing!
- ✓ No Seat License Load on any Machine
- ✓ No Annual License Fees

Free Updates.
 XP/2003/7/8/10
 32 & 64 Bit. VMware
 with ENETs.
 Run on Any
 Enabled Alta Product

AltaRTVal Software Provides Automated MIL-STD-1553 Protocol Validation for Remote Terminals Per the SAE AS4111/4112 Standard

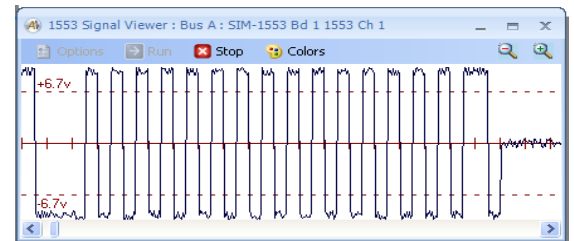
- ✓ Test RTs to Industry Standard Protocol Tests
- ✓ Generates Test Records
- ✓ Detailed Failure Analysis
- ✓ Online Reference to MIL-HDBK-1553A
- ✓ Easy to Setup & Execute Nearly 100% Automatic
- ✓ Requires Two Channel Full Function 1553 Card



MIL-STD-1553 Products

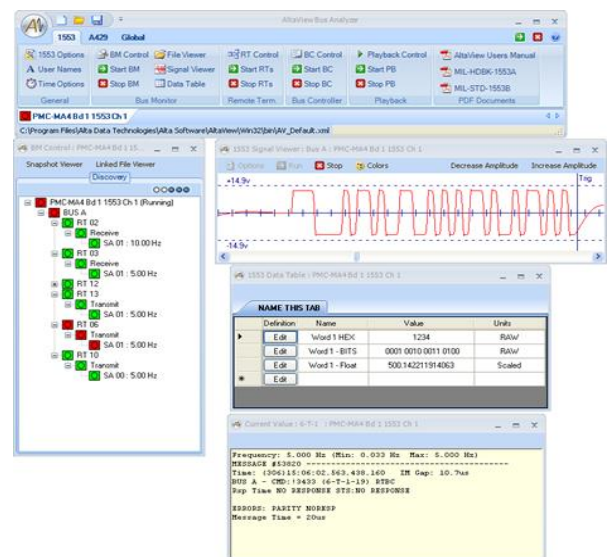
Alta 1553 Advantages

- ✓ Wide Selection of COTS Interface Cards and Real-Time Appliances
- ✓ Packetizing Engine – 3rd Gen Design
Common Data Packet (CDP) Architecture
- ✓ Portable FPGA **AltaCore** Design – Reduced Parts Obsolescence Risk
- ✓ Independent Channels – Separate Application Threads Per Channel
- ✓ Full SAE RT Protocol Validation – **No Risk**
- ✓ Most Advanced Error Injection and Detection Available
- ✓ Layered, Modular and Portable **AltaAPI** – **Simplified Integration**
- ✓ Lab, Rugged and Conduction Cooled Configurations
- ✓ Highly Accurate/Flexible BC Controls
- ✓ IRIG/PPS, External Clock Controls
- ✓ Signal Capture and Generator Standard



Advanced Software The Alta Difference

- ✓ **AltaAPI** – SDK for all Products
Drivers, 100+ Example Templates
NI LabVIEW/TestBench/Windows™
- ✓ **AltaView** Windows Bus Analyzer
Many Free Features for All Customers
- ✓ **AltaRTVal** – RT Protocol Validation



1553 COTS Product Listing

| Interface | Model Name | Channels | AV Disc | Diff Disc |
|--|------------------------|----------|---------|-----------|
| PCI | PCI-1553 | 1-4 | 14 | 2 |
| PCI Express – 4 Lane (Full Height – Most Popular) | PCIE4L-1553 | 1-4 | 14 | 2 |
| PCI Express – 1 Lane (Half Height – Ideal for 1U) | PCIE1L-1553 | 1-2 | 8 | 2 |
| PMC & PXIe: 1553,WMUX | PMC-1553/WMUX | 1-4 | 14 | 2 |
| PMC & PXIe: 1553 & 429 | PMC-MA4 | 1-5/8 | 6 | 1 |
| XMC: 1553 | XMC-1553 | 1-10 | 12 | 2 |
| XMC: 1553 & 429 | XMC-MA4 | 1-5/8 | 6 | 1 |
| USB & Thunderbolt 3 | USB/TBOLT-MA4 | 1-2/8 | 6 | 1 |
| PCMCIA/ExpressCard | PCCD/ECD54-1553 | 1-2 | 0 | 2 |
| cPCI/PXI | CPCIC-1553 | 1-5 | 14 | 2 |
| PC104-Plus | PC104P-1553 | 1-4 | 8 | 1 |
| PC104-Plus/Express | PC104P/E-MA4 | 1-2/8 | 8 | 1 |
| Mini PCI Express | MPCIE/2-1553 | 1-2 | 0/2 | 2/1 |
| Ethernet | ENET2/X-1553 | 1-4 | 6/7 | 2/1 |
| Ethernet | ENET-1553-EBR | 8 | 0 | 2 |
| Ethernet: 1553 & 429 | ENET-MA4 | 1-2/8 | 2 | 0 |
| Ethernet: Flight Qual | ENETX-MA4 | 1-2/4 | 7 | 1 |

Model Names in **GOLD** are **1553/ARINC** Combo, Multi-Protocol Models

Models Include Triggers, IRIG-B RX, Clock PPS, AV or Diff Discretes.

Various 1553 Jack Cable Assemblies Available. See Hardware Manuals for Details.

AltaCore-1553 Protocol Engine – Most Advanced in The Industry

1553 Configurations

Bus Controller (BC), Multi-RT (mRT), Bus Monitor (BM)

Channel = Dual Redundant A/B Bus Pair

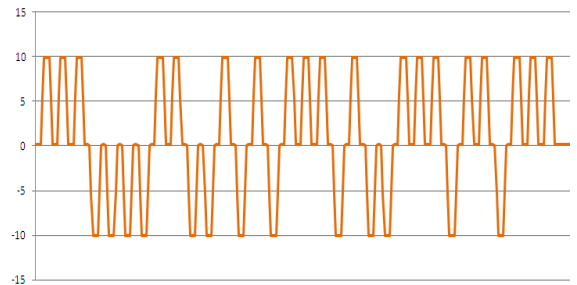
Dual Function = BC & BM or mRT & BM

Full Function = BC, mRT & BM

ARINC Products

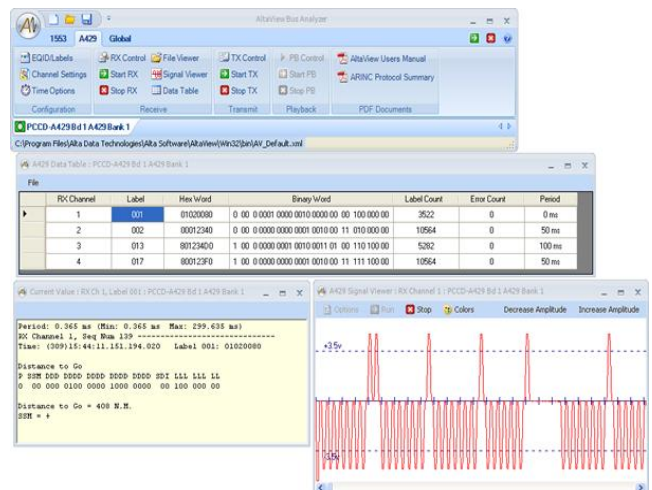
Alta ARINC Advantages

- ✓ One of the Widest Selections of COTS Interface Cards and Real-Time Ethernet Converters
- ✓ 4-48 Shared and Dedicated, Independent RX/TX Channels
- ✓ Portable FPGA **AltaCore** Design – Reduced Parts Obsolescence Risk
- ✓ Most Advanced Error Detection and Injection Available
Parametrics Variable Voltage on ENET-A429P
- ✓ Layered, Modular and Portable **AltaAPI** – **Simplified Integration**
- ✓ Lab, Rugged and Conduction Cooled Configurations
- ✓ Highly Accurate TX Scheduling
- ✓ 3 Simultaneous RX Options per Channel!
- ✓ IRIG/PPS, External Clock Controls
- ✓ Signal Capture & Generator Standard!



Advanced Software The Alta Difference

- ✓ **AltaAPI** – Most Advanced Development Kit Included
Drivers, 100+ Example Templates
NI LabVIEW/TestBench/Windows™
- ✓ **AltaView** Windows Analyzer
TX/RX Controls, Archive, Signal Capture



ARINC COTS Product Listing

| Interface | Model Name | Channels | AV Disc | Diff Disc |
|--|------------------------|-------------|---------|-----------|
| PCI | PCI-A429 | 4-30 | 8 | 2 |
| PCI Express – 4 Lane (Full Height – Most Popular) | PCIE4L-A429 | 4-30 | 8 | 2 |
| PCI Express – 1 Lane (Half Height – Ideal for 1U) | PCIE1L-A429 | 4-8 | 8 | 2 |
| PMC & PXIe | PMC-A429/HD | 4-48 | 0 | 1 |
| PMC & PXIe:1553 & 429 | PMC-MA4 | 1-5/8 | 6 | 1 |
| XMC | XMC-A429 | 4-30 | 0 | 1 |
| XMC: 1553 & 429 | XMC-MA4 | 1-5/8 | 6 | 1 |
| USB & Thunderbolt 3 | USB/TBOLT-MA4 | 1-2/8 | 6 | 1 |
| PCMCIA/ExpressCard | PCCD/ECD54-A429 | 4-8 | 2 | 2 |
| cPCI/PXI | CPCIC-A429 | 4-30 | 0 | 1 |
| PC104-Plus | PC104P-A429 | 4-24 | 6 | 1 |
| PC104-Plus/Express | PC104P/E-MA4 | 1-2/8 | 8 | 1 |
| Mini PCI Express | MPCIE-A429 | 6 | 8 | 0 |
| Ethernet | ENET-A429/P | 4-8 | 2 | 2 |
| Ethernet: 1553 & 429 | ENET-MA4 | 1-2/8 | 2 | 0 |
| Ethernet: Flight Qual | ENETX-MA4 | 1-2/4 | 7 | 1 |

Model Names in **GOLD** are **1553/ARINC** Combo, Multi-Protocol Models

Models Include Triggers, IRIG-B RX, Clock PPS, AV (SE) or Diff (DE) Discretes. Flying Lead Cables Provided with Most Cards. See Hardware Manuals for Details.

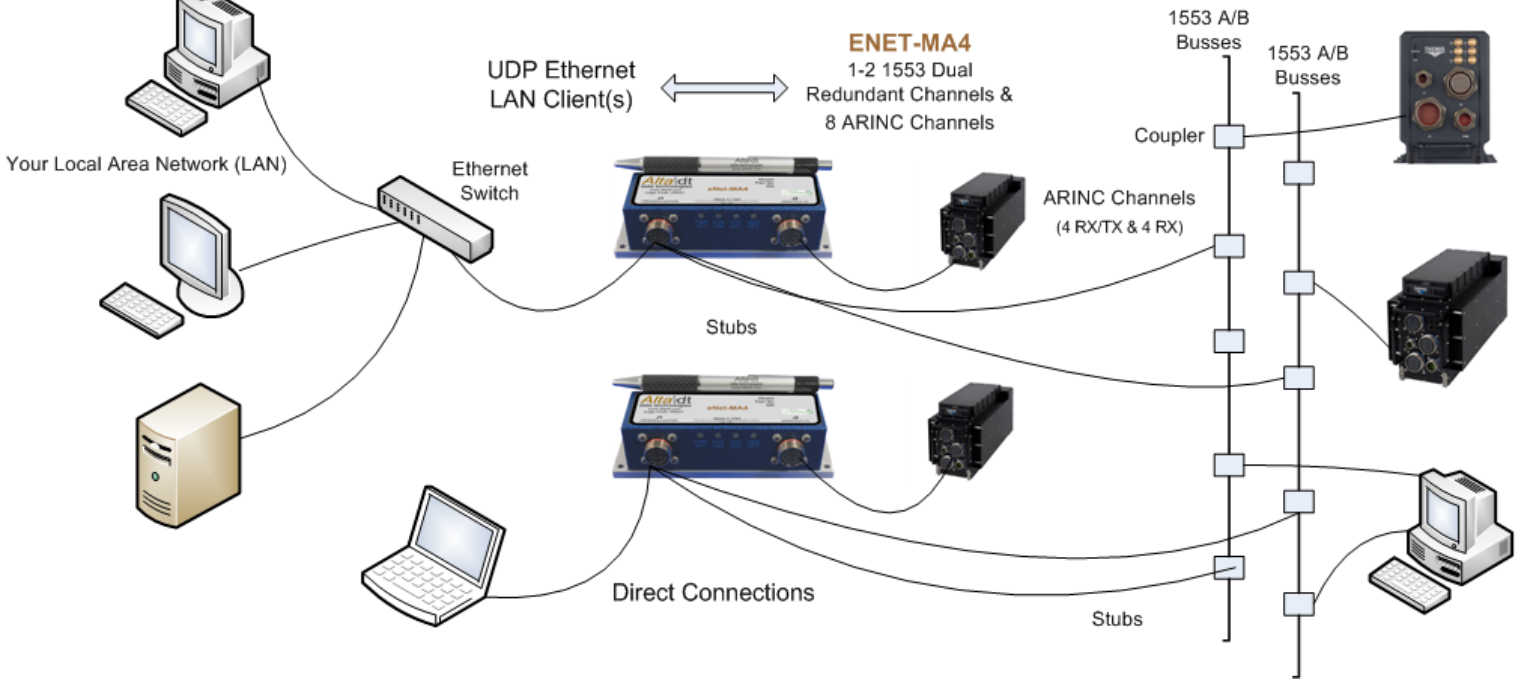
AltaCore-ARINC Protocol Engine – Most Advanced in The Industry



Product Focus

Real-Time 1553/EBR/429 Ethernet Converters

Alta's ENET-MA4 Provides Real-Time Ethernet Connectivity to Multiple MIL-STD-1553 Busses & ARINC-429 Channels
 Incredibly Small, Rugged Ethernet Appliance for Multi Protocol Applications



ENET Dedicated and Combo Models for:
 1-4 Channels 1553
 4-8 Channels ARINC
 8 Channels 1553-EBR
 ENETX Deployable
 MIL-704F/461F/810G/DO160



Actual Size
 ENETX Slightly Larger

Alta Real-Time Ethernet Advantages

- No Processor or Operating System (OS) IP Stacks!
 Real-Time UDP FPGA Engine
- Control Mode for All Operations **AND** Auto Bridge 1553/429 » Ethernet Mode
- Nearly 100x Faster Than Polling USB!
- Works with Almost Any OS – Control From Your DO178 Certified OS!

Alta – The Leading Avionics COTS Supplier! Innovation, Quality and Service

Highest Density Cards on the Market

1-10 1553 Channels & 4-48 ARINC Channels



Alta Advantages

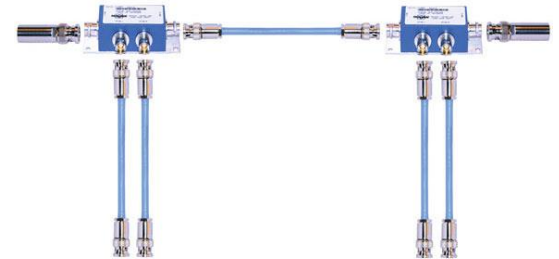
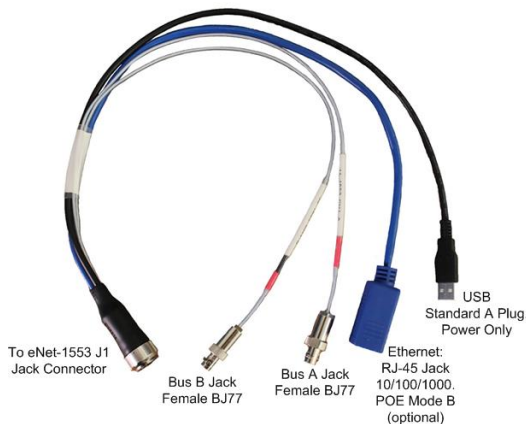
- ✓ Widest Selection of COTS 1553 and ARINC Interface Cards, USB, Thunderbolt and Real-Time Ethernet Converters
- ✓ Packetizing Engine – Only 3rd Gen Design Common Data Packet (CDP) Architecture
- ✓ Portable FPGA AltaCore Design – Reduced Parts Obsolescence Risk
- ✓ Independent Channels – Alta Unique!
- ✓ Customer Service 2nd to None – Let us Help You!
- ✓ Advanced Development Software Windows Analyzer and Protocol Validation
- ✓ 5 Year Warranty – Best In The Industry



Bus Kits and Cable Accessories Simplify Integration

(Most Alta Cards Includes 1553 Cables or ARINC Flying Lead Cables)

Bus Kits
Cables
Couplers
Terminators



Industry Leader in MIL-STD-1553 & ARINC COTS Products

- ✓ The Industry's Most Advanced Protocol Engines and Software
- ✓ 5 Year Limited Warranty
- ✓ Expert Technical Sales and Support

**Sales & Support Offices:
New York, Florida, Texas,
Colorado and California**

Alta^{dt}
data technologies

Headquarters/Factory:

Alta Data Technologies, LLC

4901 Rockaway Blvd., Bld A

Rio Rancho, NM 87124 USA

tel: 505-994-3111 fax: 805-504-8588

888-429-1553 toll free

www.altadt.com

All trademarks reserved by their respective owners. Alta claims no benefit from references. Thunderbolt and the Thunderbolt logo are trademarks of Intel Corporation in the US and/or other countries.